

Ursuline Academy of Cincinnati
5535 Pfeiffer Road Cincinnati, Ohio 45242 | (513) 791-5791

www.ursulineacademy.org

ACT-CEEB# 361125

Ursuline Academy is an academically rigorous, independent Catholic college preparatory high school with a selective entrance requirement. The 723 female students currently enrolled at Ursuline Academy reside in a variety of diverse neighborhoods in the Cincinnati metropolitan region. The school was founded by the Ursuline Sisters of Brown County in 1896. A rich curriculum focused on writing, critical thinking, research and laboratory experience is available. Course work is offered at the college preparatory, honors and AP levels. The distinct modular schedule allows for flexibility and promotes independence in the students.

Academic Profile Due to enrollment limits, our entrance requirements have significantly increased over the last several years. This factor has led to an even more academically select population. The 162 members of the graduating class of 2011 were accepted into 175 colleges and 99% of our students are continuing their education at 52 colleges.

Average Class Size:

2008–2010: 160
2011: 162

Faculty A staff of 60 professional educators has received undergraduate, graduate and doctoral training at 40 different colleges and universities. Most staff members have completed graduate work with 75% holding advanced degrees. The student-to-faculty ratio is 14 to 1.

Accreditation Ursuline Academy is approved and accredited by:

Ohio Department of Education

North Central Association of Secondary Schools and Colleges

Ohio Catholic School Accrediting Association

Rank Ursuline does not rank students due to the similar abilities within our small, select population. Our strength is such that even students in our fifth quintile have a solid academic foundation and have performed very well in competitive colleges.

PRESIDENT

Ms. Sharon L. Redmond
513-791-5791 x.1212
sredmond@ursulineacademy.org

PRINCIPAL

Mr. Thomas Barhorst
513-791-5791 x.1104
tbarhorst@ursulineacademy.org

ASSISTANT PRINCIPAL

Mrs. Mary Bender
513-791-5791 x.1103
mbender@ursulineacademy.org

GUIDANCE COORDINATOR

Dr. Marilyn Grendel
513-791-5791 x.1278
mgrendel@ursulineacademy.org

COLLEGE COUNSELOR

Mrs. Amy Hermanns
513-791-5791 x.1284
ahermanns@ursulineacademy.org

COLLEGE COUNSELOR

Ms. Michelle Pfaltzgraff
513-791-5791 x.1280
mpfaltzgraff@ursulineacademy.org

COLLEGE COUNSELOR

Ms. Jan Abernathy
513-791-5791 x.1282
jabernathy@ursulineacademy.org

FRESHMAN COUNSELOR

Mrs. Carol Dettenwanger
513-791-5791 x.1276
cdettenwanger@ursulineacademy.org

FRESHMAN COUNSELOR

Mrs. Katie Hausfeld
513-791-5791 x.1274
khausfeld@ursulineacademy.org

ADMINISTRATIVE ASSISTANT

Mrs. Jenny Foertsch
513-791-5791 x.2100
jfoertsch@ursulineacademy.org

“We learn not for school,
but for life.”

| Ursuline Academy Programs of Study | | "HN" designates HONORS Level Course | "AP" designates ADVANCED PLACEMENT |
|------------------------------------|--|-------------------------------------|------------------------------------|
| English | English 9-12; English HN 9-12; Composition 10-12; Performing Arts 9-12; Journalism 9-12; American Studies HN* 11; Creative Writing 10-12; Drama I 10-12; Drama II 11-12; Literature for the Spirit HN** 12; AP English Literature 12 | | |
| Fine Arts | Fundamentals of Art 9-12; Handbuilding in Clay 10-12; Enameling 10-12; Mixed Media 10-12; Art History 10-12; Set Design 11-12; Photography 10-12; Intro Graphic Design 10-12; Drawing & Painting 10-12; Drawing from Life 10-12; Design 10-12; 3D Design 10-12; Studio I 9; Studio II 9-10; Studio III 11-12; Studio IV 11-12; Advanced Studio 12; AP Studio Drawing 11-12; AP Studio 2D 11-12; Intro Tech Communications 9-12; Intro Web Design 10-12; Print Media 10-12; Intro Media Production 9-12; Video Production I & II 10-12; TV Production I 10-12 | | |
| Music | Music Studies 10-12; Women's Chorus 9-12; A Capella Choir 10-12; Show Choir 10-12; Chamber Music 9-12; Sinfonia 9-12; String Ensemble 9-12; Jazz Ensemble 9-12; Percussion Ensemble 9-12; Beginning Guitar 10-12 | | |
| Mathematics | Algebra I 9; Algebra I HN 9; Geometry 10; Geometry HN 9-10; Algebra II 11; Algebra II HN 9-11; Pre-Calculus 11-12; Pre-Calculus HN 10-12; AP Calculus AB 11-12; AP Calculus BC 11-12; AP Statistics 11-12 | | |
| Religious Studies | Christian Awareness 9; Scripture 10; Ethics 11-12; Evil in the Human Heart 11-12; Intro Philosophy 11-12; Philosophy II 12; Death & Hope 11-12; World Religions 11-12; Theology of Human Person 12; Church Issues 11-12; Community Service 11-12; Prayer & Spirituality 11-12; Faithful Service Learning 11-12; Literature for the Spirit**12 | | |
| Science | Biology 9; Biology HN 9; Chemistry 10-12; Chemistry HN 10-12; Environmental Science 10-12; Science Leaders 11-12; Research Applications/Skills 9-12; Anatomy/Physiology 11-12; Anatomy/Physiology HN 11-12; Physics 11-12; Physics HN 11-12; Intro Engineering HN 11-12; AP Biology 11-12; AP Chemistry 11-12; AP Physics C 12 | | |
| Social Studies | US/World Civ I 10; US World Civ II 11; World History± 10; US History± 11; American Studies HN* 11; AP US History 11; AP Psych 12; Economics 11-12; AP Macro Economics 11-12; AP Micro Economics 11-12; Intro Psychology 11-12; Greek Civ HN 11-12; Roman Civ HN 11-12; American Govt 12; AP US Govt & Politics 12; Current Issues HN 11-12; American Women's Hist 11-12 | | |
| Technology | Tech Applications 9-12; Intro Tech Communications 9-12; Intro Media Production 9-12; Print Media 10-12; TV Production I 10-12; Video Production I & II 10-12; Intro Web Design 10-12 | | |
| World Languages | French I 9-12; French II 9-12; French II HN 9-12; French III 10-12; French III HN 10-12; French IV HN 11-12; AP French 11-12; German I 9-12; German II 9-12; German III HN 10-12; German IV HN 11-12; Latin I 9-11; Latin II 9-12; Latin II HN± 10-12; Latin III HN 10-12; AP Latin 11-12; Spanish I 9-10; Spanish I HN 9-10; Spanish II 9-12; Spanish II HN 9-12; Spanish III 10-12; Spanish III HN 10-12; Spanish IV HN 11-12; AP Spanish 11-12; Chinese 9-12 | | |
| Other | Health 9; Physical Education I 9; Physical Education II 10; Cardio Core 10-12; UA Alternative 11-12 (student designed independent study) | | |

| GRADUATION REQUIREMENTS | | Students must have 23 credits in order to graduate. |
|---------------------------|---|---|
| DEPARTMENTS: | Religious Studies.....4 credits English.....4 credits Mathematics.....4 credits Social Studies.....3 credits | Physical Education/Health.....1 credit Science.....3 credits World Languages.....2 credits Electives.....2 credits |
| TOTAL CREDITS..... | | 23 credits |

- * American Studies Seminar - 1 credit English III HN and 1 credit American History HN
- ** Literature for the Spirit - 1 credit English IV HN and 1 credit Religion College Prep
- ± Latin II HN, World History and US History offered beginning 2010-2011.

TEST DATA Class of 2011 162 Students

| ACT | 159 students participated | | | | |
|----------------------|---------------------------|------|---------|---------|------|
| | English | Math | Reading | Science | Comp |
| Top 25% scored above | 32 | 29 | 32 | 29 | 30 |
| Top 50% scored above | 28 | 26 | 28 | 26 | 27 |

| SAT | 153 students participated | | |
|----------------------|---------------------------|------|---------|
| | Reading | Math | Writing |
| Top 25% scored above | 650 | 640 | 640 |
| Top 50% scored above | 601 | 581 | 588 |

Advanced Placement 2011

Enrollment open only to juniors and seniors.

200 (60%) junior and senior students completed **404** exams in **16** AP subject areas.
367 exam scores (**91%**) of the 404 total exam scores were a score of **3 or higher**.

National Merit 2011 National Merit 2012

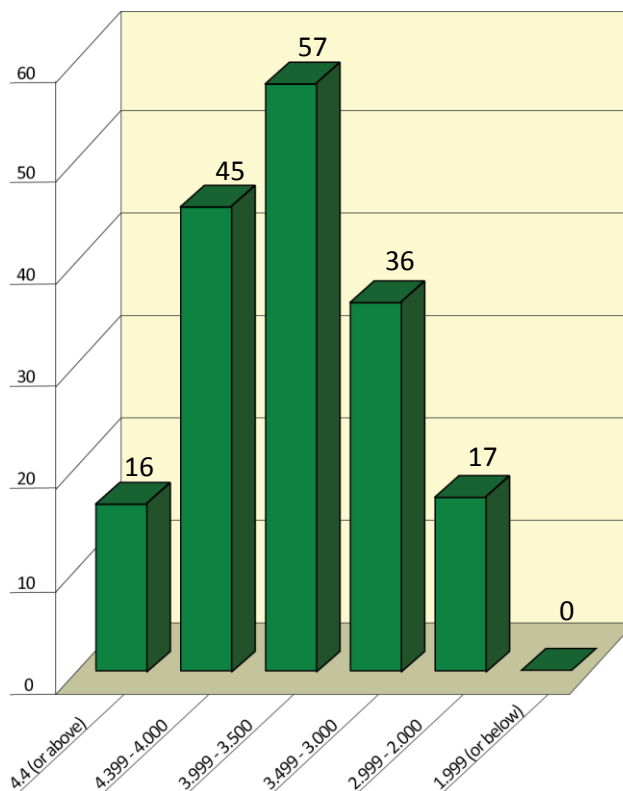
Finalists - 3
 Semi-Finalists – 6 Commended – 11

GRADE SCALE/ GRADE POINT AVERAGE

Academic Grade Point Average: Grade point averages are based on final grades and are computed at the end of each year. For all academic/college preparatory level classes, a 4+ point system is used; for Honors/AP level classes, quality points are given on a 5 point scale.

| Grade Scale | | College Prep | Honors/ AP Level |
|-------------|----|--------------|------------------|
| 99-100 | A+ | 4.34 | 5.00 |
| 95-98 | A | 4.00 | 4.67 |
| 93-94 | A- | 3.66 | 4.33 |
| 91-92 | B+ | 3.34 | 4.00 |
| 88-90 | B | 3.00 | 3.67 |
| 86-87 | B- | 2.66 | 3.33 |
| 84-85 | C+ | 2.34 | 3.00 |
| 80-83 | C | 2.00 | 2.67 |
| 78-79 | C- | 1.66 | 2.33 |
| 76-77 | D+ | 1.34 | 2.00 |
| 72-75 | D | 1.00 | 1.67 |
| 70-71 | D- | 0.66 | 1.33 |
| 69 or below | F | 0.00 | 0.00 |

CLASS OF 2012 GRADE DISTRIBUTION (6 semesters)



URSULINE
 Voice. Values. Vision.

2011- 2012 PROFILE FOR COLLEGES

Ursuline college acceptances 2008-11

Adelphi University
Allegheny College
 American Int'l University (London)
 American University
American University of Paris
 Appalachian State University
 Arizona State University
 Art Academy of Cincinnati
Auburn University
 Azusa Pacific University
 Baldwin-Wallace College
Ball State University
 Bellarmine College
Belmont University
 Beloit College
 Berea College
 Boise State University
 Bethany College
Boston College
 Boston University
 Bowling Green State University
 Bradley University
 Brown University
Bryant University
 Bryn Mawr College
Butler University
 California Polytechnic State
 Capital University
 Carnegie Mellon University
Case Western Reserve University
 Catholic University of America
 Centre College
Cinti State Tech & Comm College
 Claremont McKenna College
 Clark University
 Clarkson University
Clemson University
 Cleveland Institute of Art
 Cleveland State University
 Coastal Carolina University
 Colby College
 Colgate University
 College of Charleston
 College of Mount St. Joseph
 College of the Holy Cross
 College of William and Mary
 College of Wooster
 Colorado College
 Colorado State University
 Columbia College
Columbia University
 Columbus College Art & Design
 Connecticut College
 Cornell College
 Cornell University
 Creighton University
 Defiance College

Denison University
DePaul University
 DePauw University
 Drew University
 Drexel University
 Duke University
Duquesne University
 Earlham College
 East Carolina University
 Eastern Kentucky University
 Eastern Michigan University
 Eckerd College
Elon University
 Emerson College
 Emory University
 Fairfield University
 Florida Institute of Technology
 Florida Southern College
 Florida State University
Fordham University
 Franklin and Marshall University
Furman University
 Gardner-Webb University
George Washington University
 Georgetown University
Georgia Institute of Technology
 Georgia Southern University
 Georgia State University
 Gettysburg College
 Grand Valley State University
 Hampton University
Hanover College
 Heidelberg College
 High Point University
 Hillsdale College
 Hiram College
 Hobart and William Smith
 Hofstra University
 Hollins College
 Hope College
 Holy Cross College
 Howard University
 Illinois Institute of Technology
 Indiana-Purdue University
 Indiana State University
Indiana University
 Ithaca College
 Jacksonville University
 James Madison University
 John Carroll University
 Kalamazoo College
 Kansas City Art Institute
 Kansas State University
 Kent State University
 Kenyon College
 Kettering College
 King's College

Lafayette College
 Le Moyne College
 Lehigh University
 Lewis & Clark College
 Lipscomb University
 Long Island University
 Louisiana State University
Loyola University (IL)
 Loyola University (LA)
 Loyola University (MD)
 Macalester College
 Marian University
 Marietta College
 Marquette University
 Marshall University
 Mass Institute of Technology
 McGill University
Miami University
Michigan State University
 Middlebury College
Mills College
 Morehead State University
 Murray State University
 Muskingum College
 Nazareth College
 New York University
 Niagara University
 North Carolina State University
 NEOUCOM
 Northeast Wisconsin Tech.
 Northeastern University
 Northern Illinois University
 Northern Kentucky University
Northwestern University
 Oberlin College
Ohio University
 Ohio Dominican College
 Ohio Northern University
The Ohio State University
Ohio Wesleyan University
Otterbein College
 Palm Beach Atlantic University
 Pennsylvania State University
 Philadelphia University
 Point Park College
Princeton University
Purdue University
 Queens College
 Radford University
 Rensselaer Polytechnic Institute
 Rhodes College
 Rice University
 Rockhurst University
 Rocky Mountain College of Art
 Rollins College
 Rose-Hulman Inst of Technology
 Rutgers University

Saint Francis University
 Saint Joseph's University
Saint Louis University
 Samford University
 Santa Clara University
 Savannah College Art & Design
 Scripps College
 Seton Hall University
 Shawnee State University
 Skidmore College
 Smith College
 Southern Illinois University
 Southern Methodist University
 Spring Hill College
 St. Mary's College
 St. Norbert College
 State University of New York
Syracuse University
 Taylor University
 Thomas More College
 Towson University
 Transylvania University
 Trinity College
 Tulane University
 Tuskegee University
 United States Military Academy
 United States Naval Academy
 University of Akron
University of Alabama
 University of Arizona
University of British Columbia
 University of California
 University of Central Florida
University of Chicago
University of Cincinnati
 University of Colorado
 University of Connecticut
University of Dayton
 University of Delaware
 University of Denver
 University of Evansville
University of Findlay
 University of Georgia
 University of Illinois
 University of Indianapolis
 University of Iowa
University of Kentucky
 University of Louisville
 University of Maryland
 University of Miami
University of Michigan
 University of Minnesota
 University of Mississippi
University of Missouri
University of Nebraska
 University of New England
 University of New Hampshire

University of New Haven
 University of North Carolina
 University of Notre Dame
University of Oregon
 University of Pennsylvania
University of Pittsburgh
 University of Rhode Island
 University of Richmond
 University of Rochester
 University of Saint Thomas
 University of San Diego
 University of San Francisco
 University of Scranton
 University of the South
University of South Carolina
 University of South Florida
 University of Southern California
 University of Tampa
 University of Tennessee
 University of Texas
 University of Toledo
 University of Utah
 University of Vermont
 University of Virginia
 University of Western Ontario
 University of Wisconsin
 Valparaiso University
 Vanderbilt University
 Villanova University
 Virginia Polytechnic Institute
 Virginia Wesleyan College
Wake Forest University
 Washington & Lee University
 Washington University
 West Virginia University
 Western Carolina University
 Western Kentucky University
 Western Michigan University
 Westminster College
 Wilmington College
 Winthrop University
 Wittenberg University
 Worcester Polytechnic Institute
 Wright State University
Xavier University

Class of 2011 enrolled